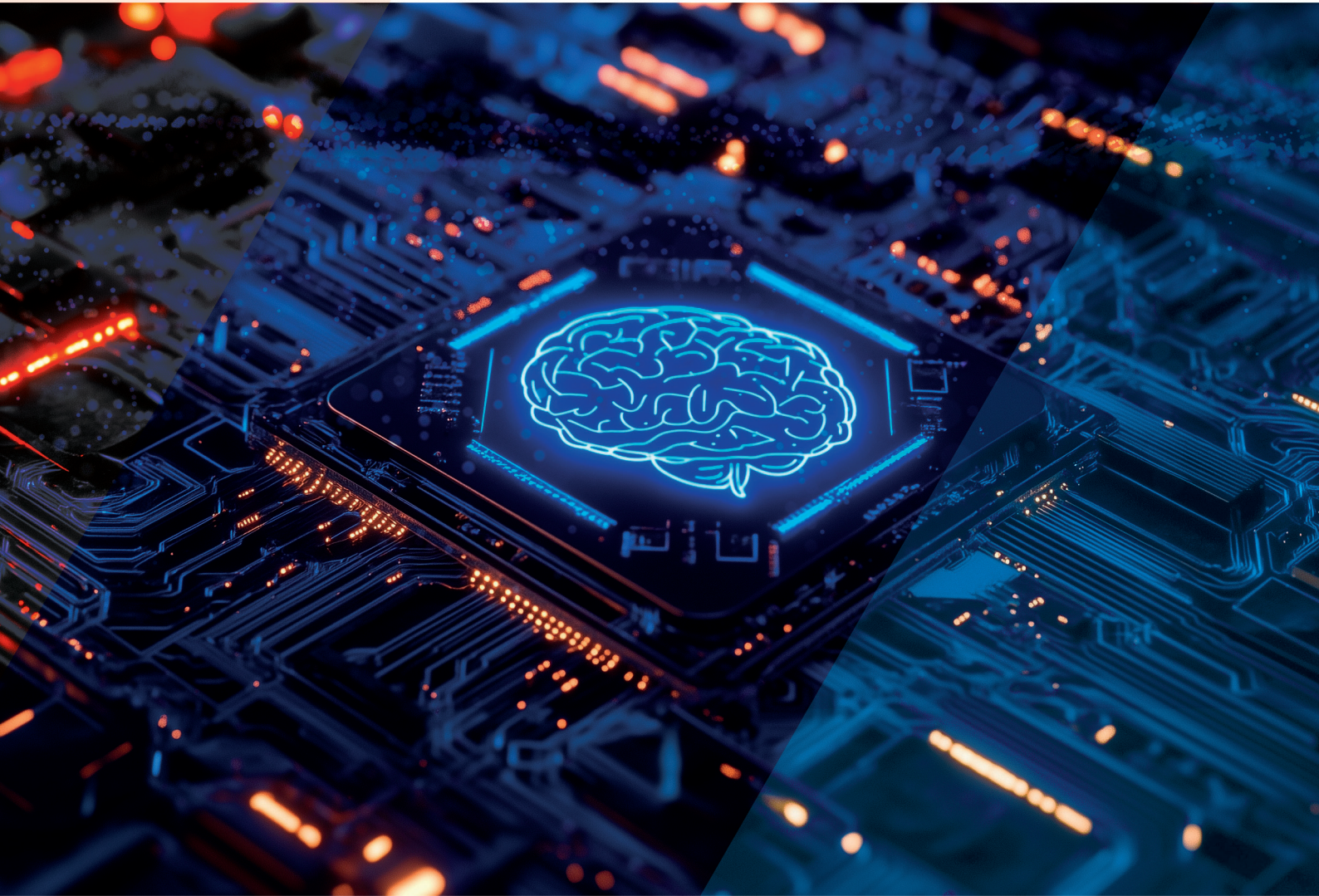




**MIAI**  
**Cluster IA**



## **MIAI Cluster:**

an international reference for Frugal & Trustworthy  
Embedded, Interactive & Generative AI at the  
service of Humans and the Environment

**UGA**  
Université  
Grenoble Alpes



# MIAI Cluster

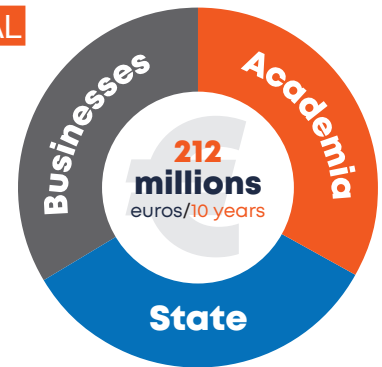
## An International and Interdisciplinary Institute in Artificial Intelligence

MIAI Cluster is an AI institute bringing together partners from the public and private sectors and aiming to develop AI for human beings and the environment.

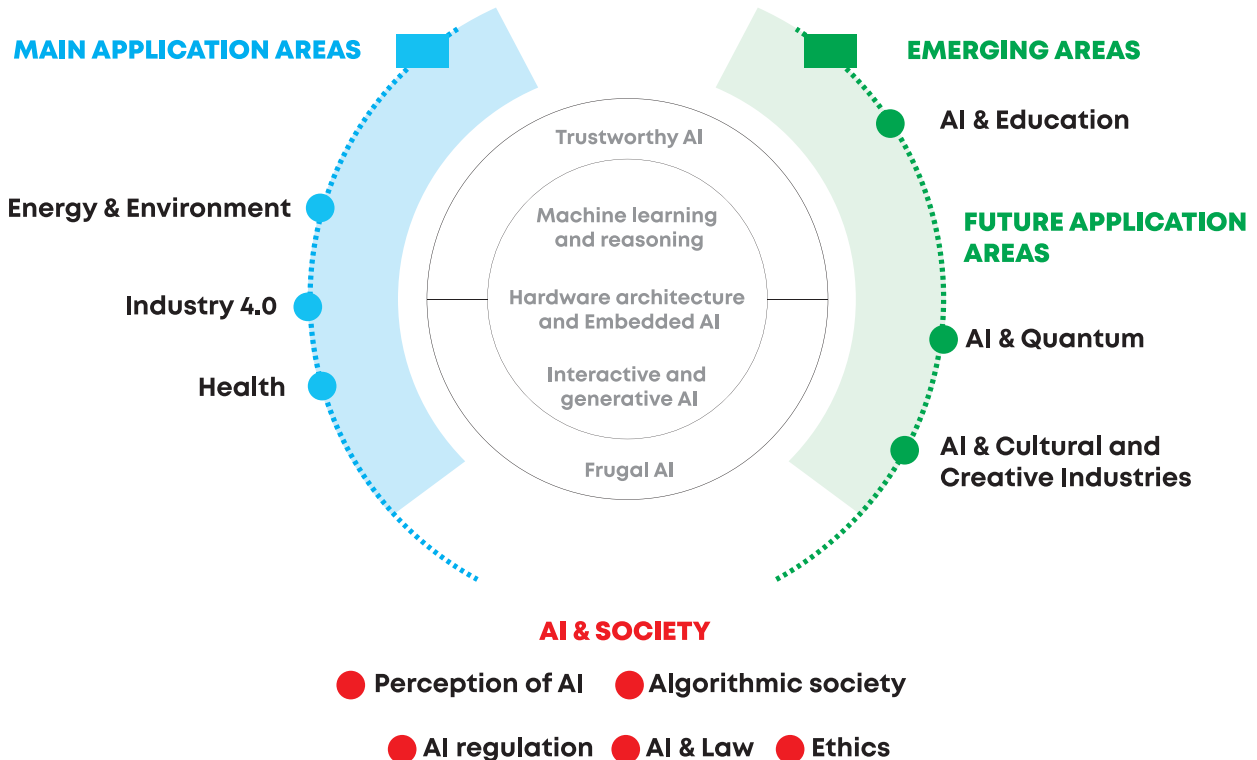
### OBJECTIVES

- Develop world-class, fundamental and applied research in AI
- Train students and professionals in core AI and applications of AI
- Propose AI solutions that can be integrated in large companies, SMBs and startups
- Inform on AI, its applications, its limitations and its potential risks

### PROVISIONAL BUDGET



### RESEARCH in ARTIFICIAL INTELLIGENCE



## WORLD-RENOWNED MULTIDISCIPLINARY ACADEMIC EXPERTISE

The existing relevant scientific environment, the proximity of the key players in research, training, and business, their capacity to closely collaborate as well as the support of public authorities provide an unmatched ecosystem for developing MIAI Cluster.



**500+**

faculty members and engineers,

**350+**

PhD students and postdoctoral researchers, working on AI and related fields



**Training: 6000+**

persons trained in AI since 2019



**1600+**

publications since 2019 of which 15% feature in the top 10 key journals & conferences



**Innovation**

**(technology/knowledge transfer):**

100+ private partners and 150 collaborative projects since 2019

## A DYNAMIC, LOCAL AND HIGH-POWERED ECOSYSTEM FOCUSED ON AI

### PARTNERS

Université Grenoble Alpes, UCA, USMB, CEA, CNRS, Inria, Grenoble INP UGA, Inserm, ENSAG, Sciences Po Grenoble UGA, CHU-GA, GEM

### COMPETITIVENESS CENTERS, CLUSTERS AND TECHNOLOGY TRANSFER ACCELERATORS

Minalogic, NanoElec, Tenerrdis, Axelera, Lyon Biopôle, Medicalps, SATT Linksum, SATT Grand Centre



**Hardware/software continuum**  
**Broad multidisciplinary scope**

### BUSINESSES & STARTUPS

100+ private partners through 150+ collaborative projects & a continuous flow of startups created

### PRIVATE/PUBLIC PARTNERSHIPS

IRT Nanoelec, Instituts Carnot Leti, Logiciels & Systèmes Intelligents - LSI, Energies du Futur, M.I.N.E.S. and iC Inria

## AI TALENT IN AURA

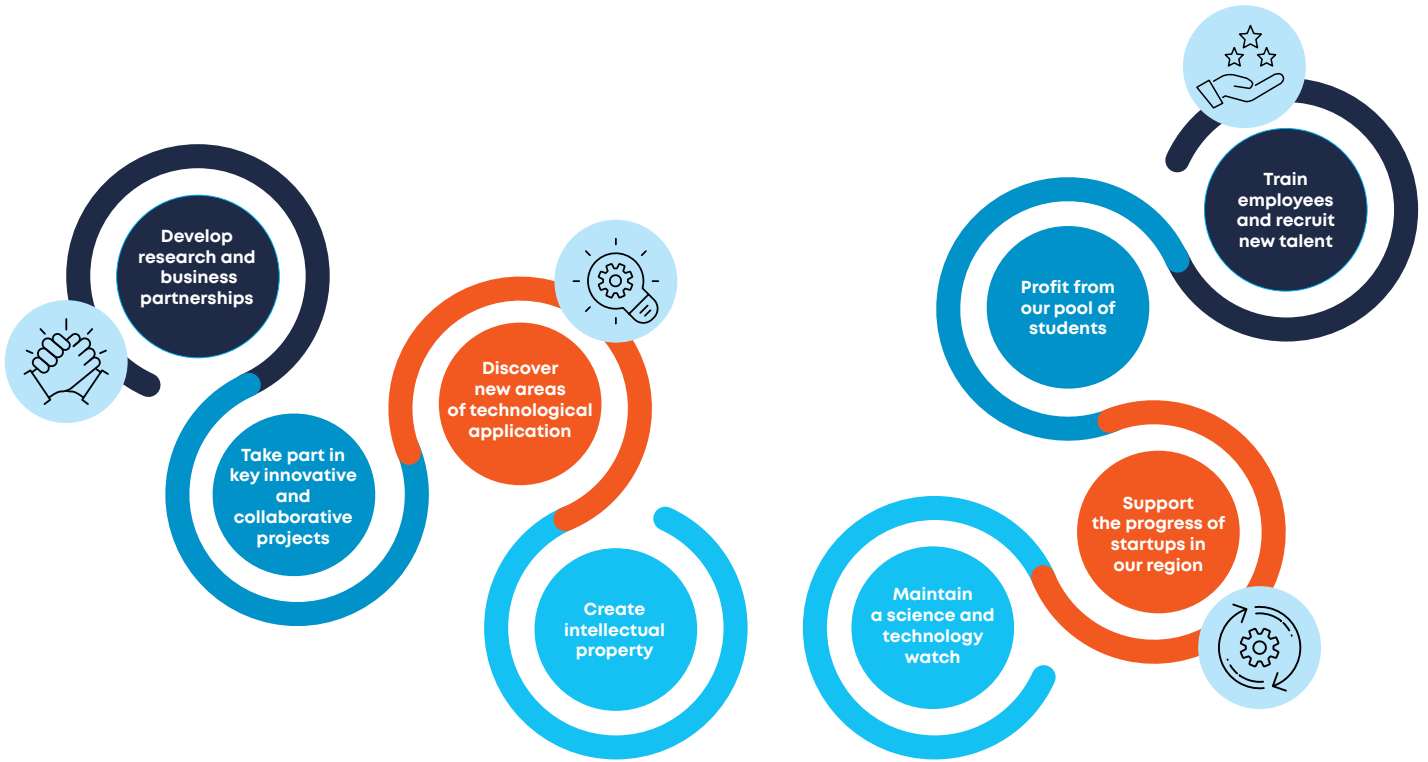
### An AI institute in an exceptional territory

- Environment with a strong international culture
- Unique life quality in the AURA Region
- High retention rate of our graduates

### Recruit, train and retain your top talent in AI

- Large talent pool of master and engineering students every year
- Recruit easily internationally
- Local continuous education programs for your employees

## STAY A PIONEER WITH ARTIFICIAL INTELLIGENCE: JOIN MIAI CLUSTER



## MIAI'S PARTNERS



100+ private partners



[miai.univ-grenoble-alpes.fr](https://miai.univ-grenoble-alpes.fr)